

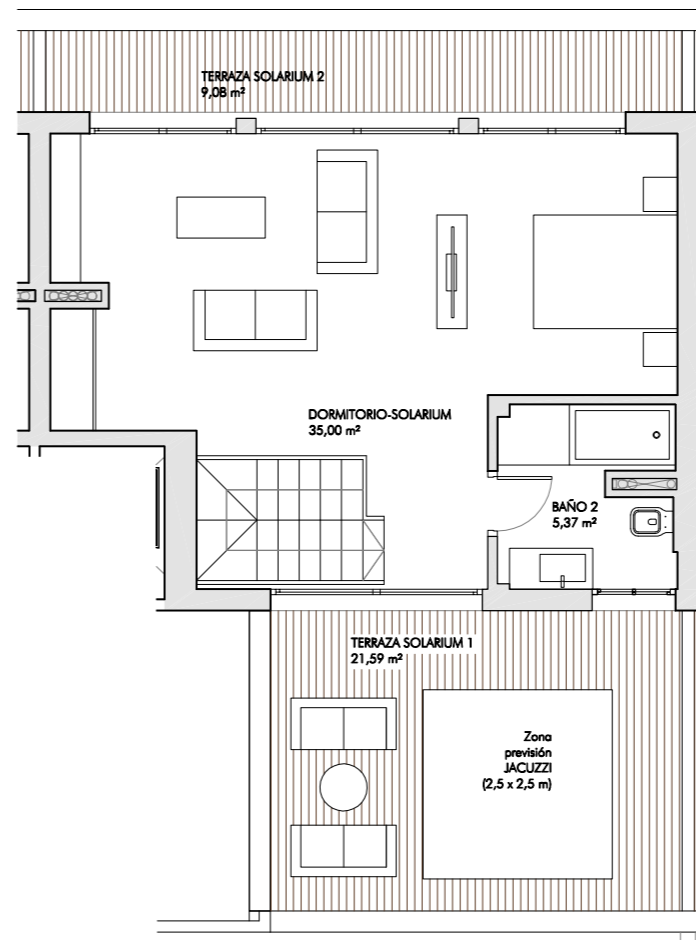
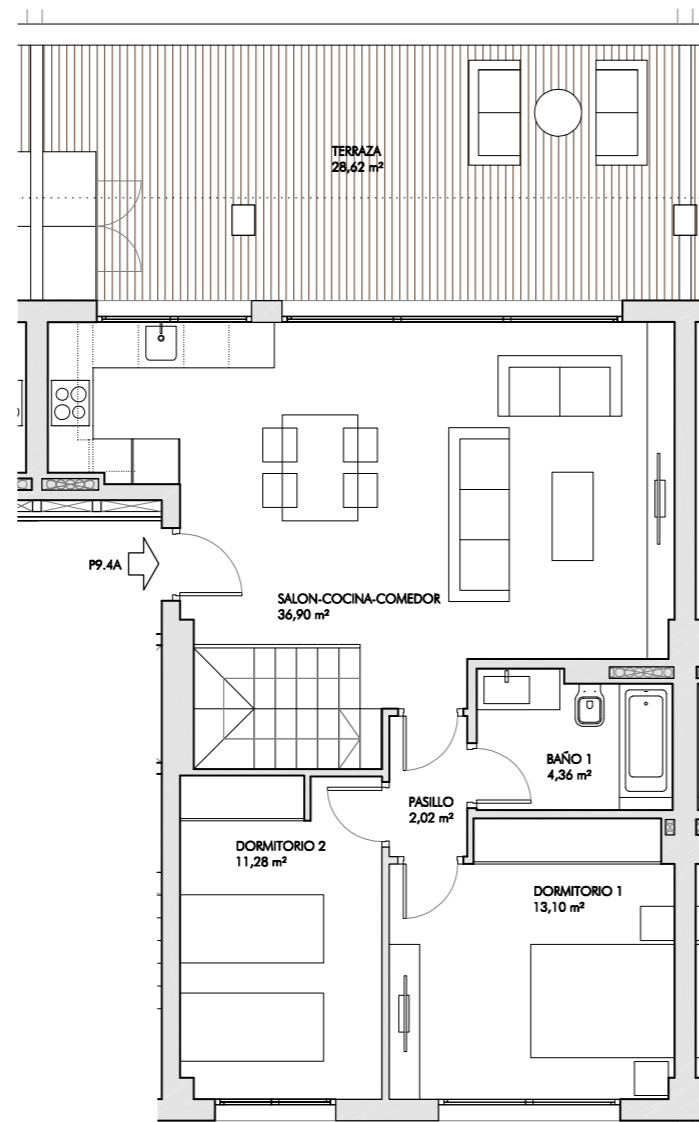
SUPERFICIES:

|                      |                      |
|----------------------|----------------------|
| SALON-COCINA-COMEDOR | 36,90 m <sup>2</sup> |
| PASILLO              | 2,02 m <sup>2</sup>  |
| DORMITORIO 1         | 13,10 m <sup>2</sup> |
| DORMITORIO 2         | 11,28 m <sup>2</sup> |
| BAÑO 1               | 4,36 m <sup>2</sup>  |
| TERRAZA              | 28,62 m <sup>2</sup> |

|                     |                      |
|---------------------|----------------------|
| DORMITORIO-SOLARIUM | 35,00 m <sup>2</sup> |
| BAÑO 2              | 5,37 m <sup>2</sup>  |
| TERRAZA-SOLARIUM 1  | 21,59 m <sup>2</sup> |
| TERRAZA-SOLARIUM 2  | 9,08 m <sup>2</sup>  |

|                                       |                       |
|---------------------------------------|-----------------------|
| SUPERFICIE CONSTRUIDA INTERIOR + PPZC | 150,73 m <sup>2</sup> |
| SUPERFICIE CONSTRUIDA TERRAZAS        | 67,09 m <sup>2</sup>  |

|                       |                       |
|-----------------------|-----------------------|
| DECRETO 218/2005      |                       |
| SUPERFICIE UTIL       | 108,03 m <sup>2</sup> |
| SUPERFICIE CONSTRUIDA | 150,17 m <sup>2</sup> |



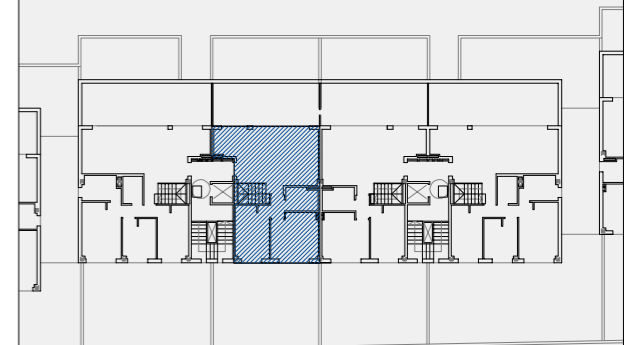
VIVIENDA:

Portal 09  
Vivienda 3 Dormitorios  
Planta Ático - P9.4A

BLOQUE:

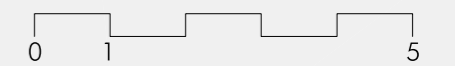


UBICACION VIVIENDA:



Residencial Alamar

PARCELA M-B2. SECTOR SUP-R-1.8 "LA CIZAÑA"  
Torremolinos - Málaga



ESCALA 1/100

